

# ZCUBE

## OpenZone Talk

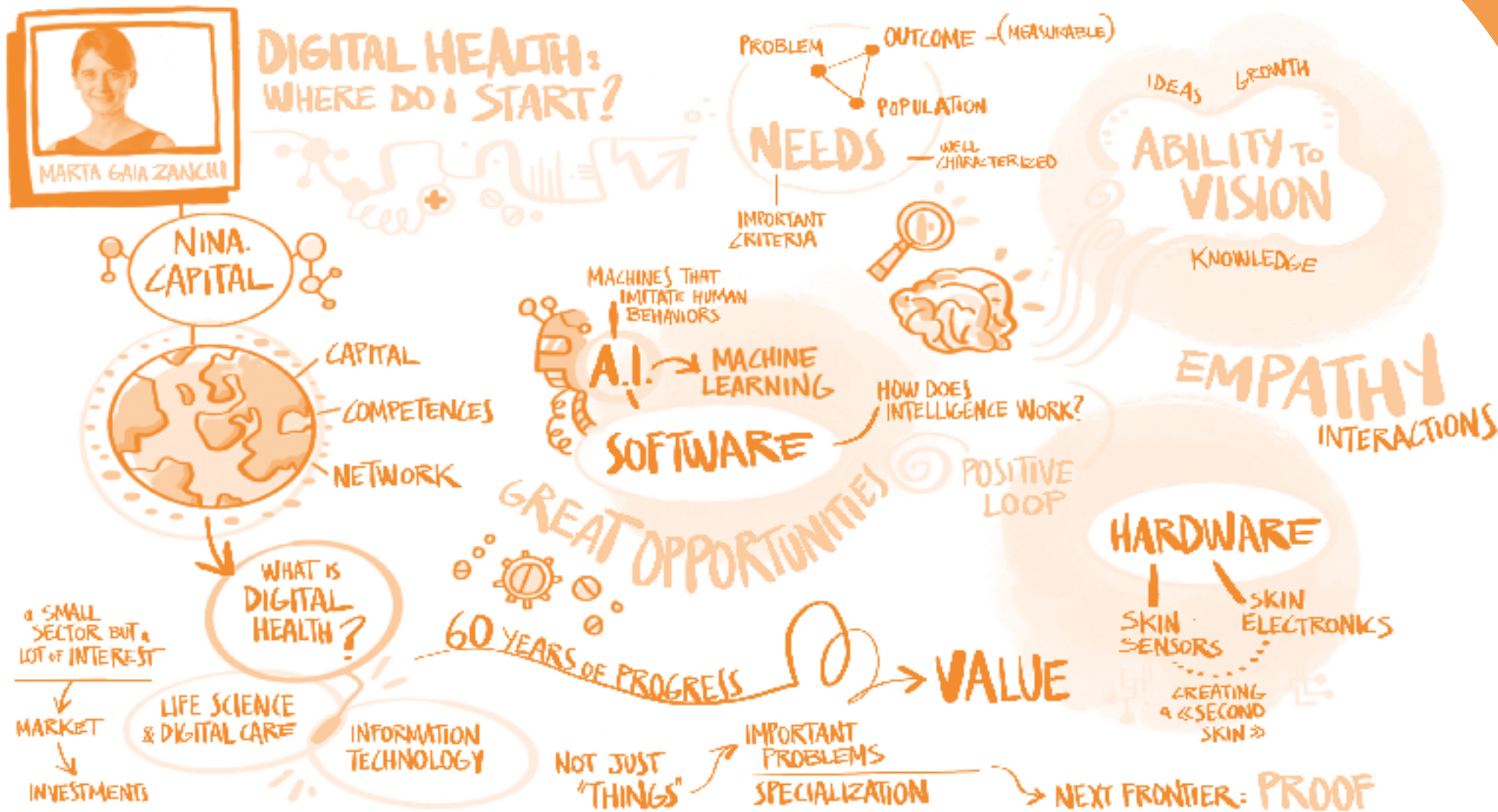
Sharing Ideas with  
Marta Gaia Zanchi

Founder and Managing Partner of Nina Capital  
24 June 2019

Zcube .....48

Open Accelerator.....50

CareApt .....52



Discover the digital version of this section



# ZCUBE



A completely digital edition of Open Accelerator

With ParkinsonCare, CareApt launched a solidarity initiative, and it began the development of DemedyaCare

Corporate Venture continued its activities

## INNOVATIVE SOLUTIONS FOR THE FUTURE OF HEALTH

Research Venture set up in 2003 to explore the sphere of research and innovation in the Life Sciences globally. It specializes in supporting the growth and acceleration of innovative startups operating in its areas of interest, such as respiratory issues or neurodegenerative diseases.

It identifies and develops **modern solutions** to improve patients' lives, **based on the use of digital technologies** alongside traditional therapies. Zcube has three workstreams:

- The **development of innovative solutions** inspired by the principles of **value-based healthcare**, designed to meet the needs of all of the stakeholders involved in the healthcare ecosystem, particularly patients and caregivers. Over the years, the importance of the Zcare division has steadily grown, leading to **CareApt**, a new startup launched in 2018.
- 2020 saw the fourth edition of **Open Accelerator**, the international accelerator program dedicated to startups in the Life Sciences, which was characterised by a strong focus on digital technologies.
- **Corporate Venture** investment activities in national and international funds operating chiefly in the Life Sciences sector.

Zcube actively collaborates with all players in the Life Sciences ecosystem and is on the jury of various startup initiatives, including UniCredit StartLab, Premio Marzotto and MIt4LS.



# OPEN ACCELERATOR



## DIGITAL TECHNOLOGIES AT THE HEART OF THE 2020 CALL FOR SOLUTIONS

Open Accelerator is the international accelerator program dedicated to startups in the Life Sciences.

Now in its fourth edition, it identifies and finances the best solutions that will define the future of health.

The 2020 Call for Solutions was very strongly focused on **digital technologies**, with the following categories:

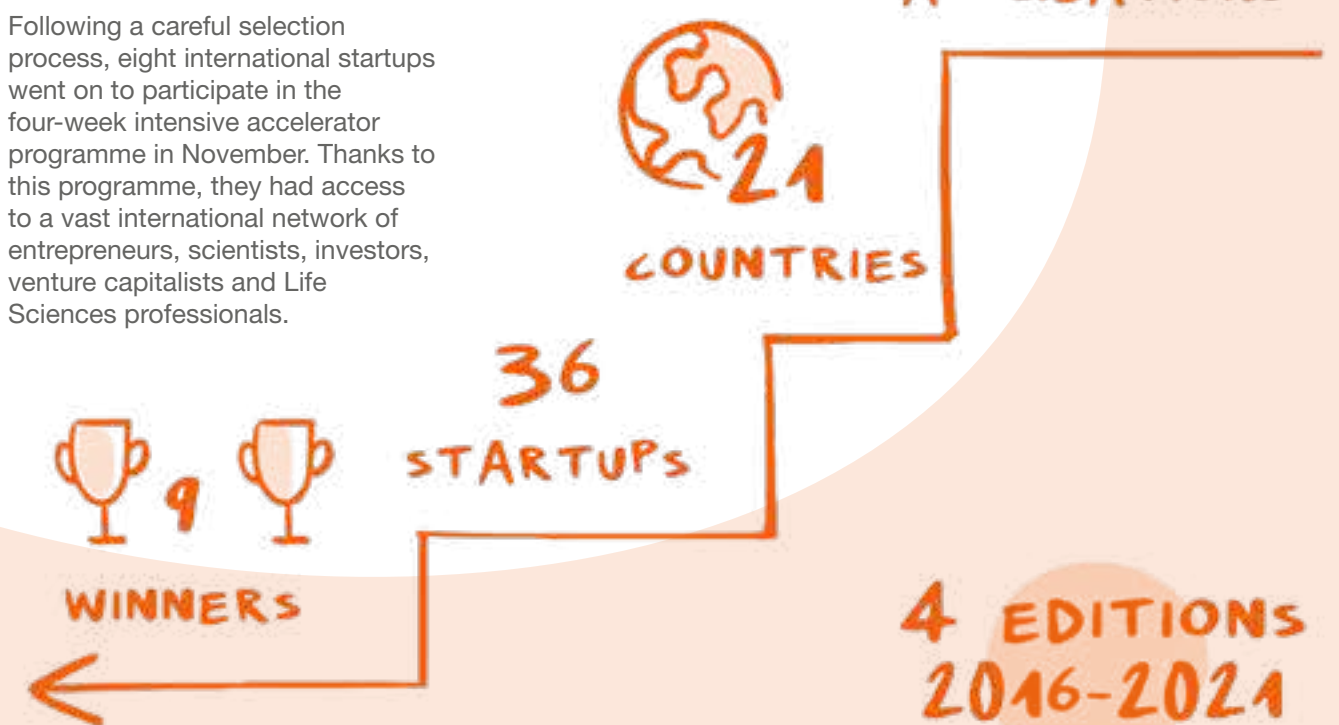
- Digital Diagnostics
- Virtual Health
- Digital prevention, monitoring & therapeutics
- Clinical trials digitalization
- Special challenge: New ways to interact

Following a careful selection process, eight international startups went on to participate in the four-week intensive accelerator programme in November. Thanks to this programme, they had access to a vast international network of entrepreneurs, scientists, investors, venture capitalists and Life Sciences professionals.

In December, the **best innovative projects** were announced: the Canadian startup **Hyivy Health** won the Distinction Award and funding of up to €100,000, while the startups **BreatheCore** and **WEARnCARE** received the Special Support Program Award, which provides up to twelve months of management coaching.

Over the course of its four editions, Open Accelerator has received applications from 228 candidates from 21 countries, has selected 36 startups, offering them access to the accelerator programme, and has awarded funding of up to €100,000 each to 9 startups. Some of these, including Biorek and Prindex, are now fully owned by Zcube.

Zcube is currently in touch with all award-winning and participating startups for specific follow-up activities.



# CAREAPT

## PARKINSONCARE



ParkinsonCare brought into being Europe's first digital collaborative care network for Parkinson's Disease

Over 700 patients received assistance free of charge during the Covid-19 emergency

DemedyaCare, intended for people with dementia and their caregivers, is in the pipeline

## DEMEDYACARE



OVER 700 PATIENTS



TELENURSING INTERVENTIONS

247 TELEVISITS



20 ON EMERGENCY ROOMS



Scientific publications on ParkinsonCare in 2020  
 Parkinsonism & Related Disorders  
 British Journal of Neuroscience Nursing  
 Nature Reviews

The ParkinsonCare campaign, created in partnership with INC, was selected as the winner in the category Corporate Social Responsibility / Social Impact of the 23rd Edition of the Assorel Award

CareApt is the startup founded by Zcube in 2018, dedicated to the development of integrated Hi-Tech/Hi-Touch solutions for transforming chronic disease treatment into a person-centred experience of human relations and care.

Its first service was ParkinsonCare, a remote nursing care platform for people with Parkinson's Disease, their caregivers and their healthcare teams.

It is a digital solution that combines:

- a human interface (a nurse specialised in the triaging and non-pharmacological management of the specific symptomatology of Parkinson's Disease)
- a digital platform for collaborative care, aimed to ensure that clinical informations are shared and to establish improved coordination of the healthcare services provided by the patient's family doctor and by their neurologist

- a suite of 13 digital algorithms for evidence-based triage and decision making.

In 2020, during the Covid-19 emergency, ParkinsonCare was made available free of charge throughout Italy.

During that period, this solidarity initiative—undertaken jointly with the non-profit organisation Confederazione Parkinson Italia, in partnership with the Carlo Besta Neurological Institute and Santo Stefano Riabilitazione, and with the sponsorship of Fondazione Limpe and Accademia Limpe-Dismov—led to the creation of the first digital collaborative healthcare network for Parkinson's Disease in Europe and provided daily care to over 700 patients and their caregivers, enabling them to manage the disease from home and avoid hospital visits and outpatient consultations, thereby also reducing the risk of infection.

The benefits of this model of remote integrated nursing care, which combines care management and case management, are numerous and affect all of the stakeholders involved: the local health authority, the patient, the specialist and the caregiver.

The ParkinsonCare experience, which has been recognized as an example of excellence by three leading international scientific publications, could provide a basis for establishing a paradigm applicable to a variety of other clinical settings in chronic disease care, thanks in particular to the service's scalability.

The CareApt team is currently working to develop DemedyaCare, an occupational case & care management solution intended for people with dementia and their caregivers.

## Patient-centricity for Parkinson's

According to the results of a survey conducted by the CRC Head of the University of Milan.

Sample of 116 Patients who used ParkinsonCare



97% It is easily accessible



88% It helped me to improve my control on symptoms



86% It helped me to improve my understanding of symptoms

